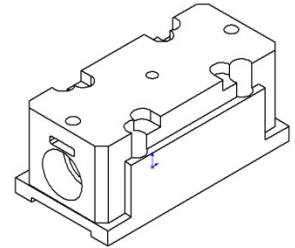
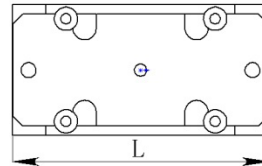
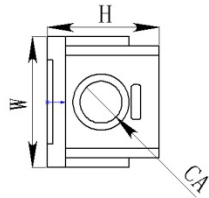


## 定制 LN 开关参数

## LN POCKELS CELL



产品型号 Model	NL032855G1	NL052855G1	NL082855G1	NL092855G1
外壳尺寸 L×W×H (mm) Dimensions	55×28×24			
晶体尺寸 (mm) Crystal Size	3*3*25	5*5*25	8*8*25	9*9*25
透光孔径CA (mm) Clear Aperture	2.5	5	8	9
波长 Wavelength	1064nm	1064nm	1064nm	1064nm
电极类型 Electrodes	Au/Cr	Au/Cr	Au/Cr	Au/Cr
四分之一波电压 (V) Quarter Wave Voltage	≈885 @1064nm	≈1400 @1064nm	≈2400V @1064nm	≈2700V @1064nm
插入损耗 Insertion Loss	<3%	<3%	<3%	<3%
波前畸变 Wavefront Distortion	$\lambda/8$ @ 632.8nm	$\lambda/8$ @ 632.8nm	$\lambda/8$ @ 632.8nm	$\lambda/8$ @ 632.8nm
消光比 Extinction Ratio	>500:1	>500:1	>500:1	>500:1
电容 (pF) Capacitance	<5	<5	<5	<5
损伤阈值 LIDT	300MW/cm <sup>2</sup> 腔内光束均匀无强点	300MW/cm <sup>2</sup> 腔内光束均匀无强点	300MW/cm <sup>2</sup> 腔内光束均匀无强点	300MW/cm <sup>2</sup> 腔内光束均匀无强点

\*选用近化学计量比 LN 或 MgO:LN。也可定制圆柱形壳体。结构及功能参数均可根据客户要求定制。图片及表格仅供参考，不构成要约，实际参数以合同约定为准。